

ANA-QUICK® NYLON SERIES FITTINGS

FITTINGS WITH METRIC METALLIC THREADS



DESCRIPTION:

With similar characteristics to the standard polyamide connectors, the male metal metric thread connectors are notable for their higher mechanical resistance, being recommended in the most severe conditions. An internal plastic wall on the metal insert avoids a direct contact with the cables. Specially used in railway industry.

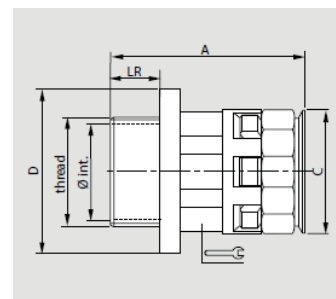
SPECIFICATIONS:

- Made of specially modified polyamide (PA6)
- Nickel-plated brass thread
- Free of halogen, phosphorus and cadmium
- Self-extinguishing
- Shock-resistant
- Temp. range: -40°C to +105°C (150°C short term)
- IP66 protection (IP68/IP69 with O-Ring and Sealing Washer)
- "Easy-click" quick assembly and removal of the conduit without tools
- Colour: black

METRIC METALLIC THREAD STRAIGHT FITTINGS



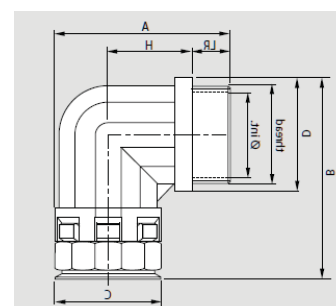
Size NW	Item ID	Thread Size	Dimensions mm (inches)				Std. Pkg.
			Ø INT	A	C	D	
12	AFM0-12M20B	M20x1.5	14.5 (0.571)	43 (1.693)	25 (0.984)	29 (1.142)	50
17	AFM0-17M20B	M20x1.5	14.5 (0.571)	47 (1.850)	30 (1.181)	29 (1.142)	30
23	AFM0-23M25B	M25x1.5	18.8 (0.740)	55 (2.165)	36 (1.417)	35 (1.378)	30
29	AFM0-29M32B	M32x1.5	25.8 (1.016)	56 (2.205)	44 (1.732)	43 (1.693)	20
36	AFM0-36M40B	M40x1.5	32.2 (1.268)	61 (2.402)	52 (2.048)	55 (2.165)	10
48	AFM0-48M50B	M50x1.5	42.0 (1.654)	62 (2.441)	69 (2.717)	67 (2.638)	10



METRIC METALLIC THREAD 90° FITTINGS



Size NW	Item ID	Thread Size	Dimensions mm (inches)				Std. Pkg.
			Ø int	A	C	D	
12	AFM9-12M20B	M20x1.5	14.1 (0.555)	44 (1.732)	47 (1.850)	25 (0.984)	50
17	AFM9-17M20B	M20x1.5	14.1 (0.555)	50 (1.969)	58 (2.284)	30 (1.181)	50
23	AFM9-23M25B	M25x1.5	18.5 (0.728)	57 (2.244)	65 (2.560)	36 (1.417)	30
29	AFM9-29M32B	M32x1.5	25.5 (1.004)	69 (2.717)	75 (2.958)	45 (1.772)	10
36	AFM9-36M40B	M40x1.5	32.0 (1.260)	79 (3.110)	92 (3.622)	54 (2.126)	10
48	AFM9-48M50B	M50x1.5	42.3 (1.665)	94 (3.701)	102 (4.016)	68 (2.677)	5



Lock nuts are NOT included with fittings.