

SPECIALTY FITTINGS

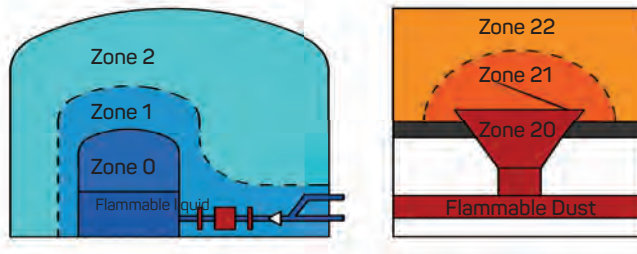
ANAMET SPECIALTY ATEX FITTINGS FOR IEC EX EXPLOSION-PROOF AREAS EXPLANATION OF IEC EX-ZONES

ANAMET's ATEX Fittings are based on the European IEC Ex directives.

Care must be taken when applying these to North American installations. Final responsibility of the suitability of the application is up to the customer and the local regulatory standards.

This is a brief explanation and comparison to North American standards.

LOCALIZATION OF GAS & DUST EX-ZONES



GROUP I - EQUIPMENT FOR USE IN MINING:

Hazardous Atmosphere	Risk	Zone	Category Equipment	ANAMET ATEX System allowed	Security level
Mine Gas, Combustible Dusts	Continuously or for long periods	0	I M1	No	Very high (also safe in case of 2 independent failures)
Mine Gas, Combustible Dusts	Occasionally	1	I M2	Yes	High (also safe in case of 1 failure)

GROUP II - EQUIPMENT FOR USE IN ALL OTHER EXPLOSIVE ATMOSPHERES:

Hazardous Atmosphere	Risk	Zone	Category Equipment	ANAMET ATEX System allowed	Security level
Gases, Vapours and Mists	Continuously or for long periods	0	II 1 G	No	Very high (also safe in case of 2 independent failures)
Gases, Vapours and Mists	Occasionally	1	II 2 G	Yes	High (also safe in case of 1 failure)
Gases, Vapours and Mists	Infrequently or for short periods	2	II 3 G	Yes	Normal (safe during normal functioning)
Dusts	Continuously or for long periods	20	II 1 D	No	Very high (also safe in case of 2 independent failures)
Dusts	Occasionally	21	II 2 D	Yes	High (also safe in case of 1 failure)
Dusts	Infrequently or for short periods	22	II 2 D II 3 G	Yes Yes	High (conducting Dusts) Normal (non-conducting Dusts)

DIFFERENCES BETWEEN EUROPEAN AND NORTH AMERICAN STANDARDS:

Region	Constant presence risk	Occasional presence risk	Presence risk only in case of failure
IEC/Europe	Zone 0	Zone 1	Zone 2
U.S./Canada	Division I		Division II

SPECIALTY FITTINGS

ANAMET SPECIALTY ATEX FITTINGS FOR IEC EX EXPLOSION-PROOF AREAS OVERVIEW OF ANAMET ATEX SYSTEM

Once you have determined that you can use the ANAMET ATEX fitting system, you need to confirm required part numbers.

This catalogue shows only the Barrier type fittings/adaptors for loose wires. This system includes a 2-part epoxy to create the barrier. There are also options for single cables, armoured or non-armoured available by special order from our European plant.

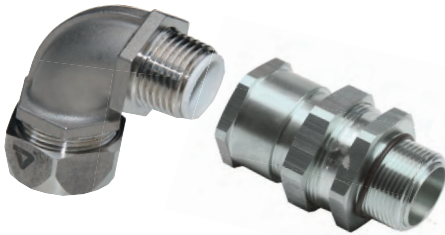
The 2-part epoxy is used to fill the internal space in the specially designed chamber. Instructions are included with each fitting which must be followed in order to ensure a proper barrier to the explosive substance. Once the epoxy is fully set, the fitting can then be assembled per the instructions.

SEALTITE®
FITTINGS




STEPS TO DETERMINING PART NUMBERS:

1. Straight or 90°
 - Straight - BXA fitting
 - 90° - BXC adaptor + Standard Fitting
2. Material
 - Nickel Plated Brass - xxx.xxx.0
 - Stainless steel AISI-316 - xxx.xxx.9



FOR LOOSE WIRES, EACH FITTING/
ADAPTOR IS CERTIFIED AND MARKED:

△RCN {type} {threadsize} CE 0080
I M2 / II GD / Ex d II C / Ex e II / Ex d I / 
Ex tD A 21 IP66 INERIS 06ATEX0014X

SPECIALTY FITTINGS

SEALTITE® ATEX FITTINGS NICKEL PLATED BRASS NPT/METRIC FITTINGS



DESCRIPTION

- Explosion Proof fittings for any SEALTITE® conduit (except CNP).
- IECEx-ATEX approved barrier fittings to provide seal around loose wires inside a SEALTITE® conduit.
- Barrier around loose wires created through a bi-compound epoxy sealing supplied with the fitting.
- IP67 on the conduit and IP66 between fitting and switch box.

SPECIFICATIONS

- Nickel Plated Brass with PTFE clamping ring.
- Separate 2 compound epoxy provided for creating barrier.
- Colour: silver
- Temp. range: -45°C to 105°C (-49°F to 221°F)
- IECEx-ATEX certified:
CE0080 I M2 / II 2 GD / Ex d II C / Ex e II / Ex d I / Ex tD A 21 IP66

APPLICATIONS

- Metallic and Type B non-metallic flexible conduit
- Explosion-proof areas where Zone system used
- Machinery for export to other countries where Zone system used

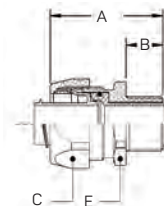
Note: For 90 degree versions, use
BXC adaptor + Standard Fitting

SEALTITE®
FITTINGS

BARRIER BXN NPT:



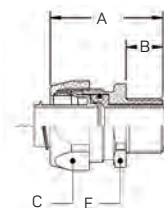
Trade Size	Item ID	Min. Int. Bore	Dimensions mm				KO Size NPT	Weight kg(lb)/100	Std. Pkg.
			A	B	C	E			
3/8"	827.012.0	10.4	45	18	26	25	1/2"	10.6 (23.4)	10
1/2"	827.016.0	13.8	47	18	30	28	1/2"	11.2 (24.7)	10
3/4"	827.020.0	18.5	48	18	35	34	3/4"	15.3 (33.7)	5
1"	827.026.0	23.8	54	22	45	43	1"	26.9 (59.3)	5
1-1/4"	827.035.0	31.9	59	22	55	52	1-1/4"	40.8 (89.9)	2



BARRIER BXN METRIC:



Trade Size	Thread ISO	Item ID	Min. Int. Bore	Dimensions mm				Weight kg(lb)/100	Std. Pkg.
				A	B	C	E		
3/8"	M16 x 1.5	826.016.0	10.4	45	18	26	25	8.2 (18.1)	10
1/2"	M20 x 1.5	826.020.0	13.8	47	18	30	28	11.0 (24.3)	10
3/4"	M25 x 1.5	826.025.0	18.5	48	18	35	34	14.9 (32.8)	5
1"	M32 x 1.5	826.032.0	23.8	54	22	45	43	25.8 (56.9)	5
1-1/4"	M40 x 1.5	826.040.0	31.9	59	22	55	52	39.1 (86.2)	2



SPECIALTY FITTINGS

SEALTITE® ATEX FITTINGS STAINLESS STEEL AISI-316 NPT/METRIC FITTINGS



DESCRIPTION

- Explosion Proof fittings for any SEALTITE® conduit (except CNP)
- IECEx-ATEX approved barrier fittings to provide seal around loose wires inside a SEALTITE® conduit
- Barrier around loose wires created through a bi-compound epoxy sealing supplied with the fitting
- IP67 on the conduit and IP66 between fitting and switchbox
- Excellent corrosion resistance with AISI-316 Stainless Steel

SPECIFICATIONS

- AISI-316 Stainless Steel with PTFE clamping ring.
- Separate 2 compound epoxy provided for creating barrier.
- Colour: silver
- Temp. range: -45°C to 105°C (-49°F to 221°F)
- IECEx-ATEX certified:
CE0080 I M2 / II 2 GD / Ex d II C / Ex e II / Ex d I / Ex tD A 21 IP66

APPLICATIONS

- Metallic and Type B non-metallic flexible conduit
- Explosion-proof areas where Zone system used
- Machinery for export to other countries where Zone system used
- Superior corrosion resistance with 316 Stainless

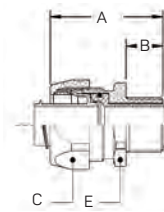
Note: For 90 degree versions, use
BXC adaptor + Standard Fitting

SEALTITE®
FITTINGS

BARRIER BXN NPT:



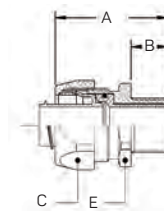
Trade Size	Item ID	Min. Int. Bore	Dimensions mm				KO Size NPT	Weight kg(lb)/100	Std. Pkg.
			A	B	C	E			
3/8"	827.012.9	10.4	45	18	26	25	1/2"	10.6 (23.4)	10
1/2"	827.016.9	13.8	47	18	30	28	1/2"	11.2 (24.7)	10
3/4"	827.020.9	18.5	48	18	35	34	3/4"	15.3 (33.7)	5
1"	827.026.9	23.8	54	22	45	43	1"	26.9 (59.3)	5
1-1/4"	827.035.9	31.9	59	22	55	52	1-1/4"	40.8 (89.9)	2



BARRIER BXN METRIC:



Trade Size	Thread ISO	Item ID	Min. Int. Bore	Dimensions mm				Weight kg(lb)/100	Std. Pkg.
				A	B	C	E		
3/8"	M16 x 1.5	826.016.0	10.4	45	18	26	25	8.2 (18.1)	10
1/2"	M20 x 1.5	827.020.0	13.8	47	18	30	28	11.0 (24.3)	10
3/4"	M25 x 1.5	827.025.0	18.5	48	18	35	34	14.9 (32.8)	5
1"	M32 x 1.5	827.032.0	23.8	54	22	45	43	25.8 (56.9)	5
1-1/4"	M40 x 1.5	827.040.0	31.9	59	22	55	52	39.1 (86.2)	2



SPECIALTY FITTINGS

SEALTITE® ATEX FITTINGS NICKEL PLATED BRASS NPT/METRIC SWIVEL ADAPTORS



DESCRIPTION

- Explosion Proof adaptor to be used with standard SEALTITE® Fittings for 90 degree (SEALTITE® Fitting not included)
- IECEx-ATEX approved barrier fittings to provide seal around loose wires inside the adaptor
- Barrier around loose wires created through a bi-compound epoxy sealing supplied with the adaptor
- IP66 between fitting and switch box

SPECIFICATIONS

- Nickel Plated Brass Female Adaptor
- Separate 2 compound epoxy provided for creating barrier
- Colour: silver
- Temp. range: -45°C to 105°C (-49°F to 221°F)
- IECEx-ATEX certified:
CE0080 I M2 / II 2 GD / Ex d II C / Ex e II / Ex d I / Ex tD A 21 IP66

APPLICATIONS

- Female adaptor to standard SEALTITE® fitting.
- Explosion-proof areas where Zone system used
- Machinery for export to other countries where Zone system used

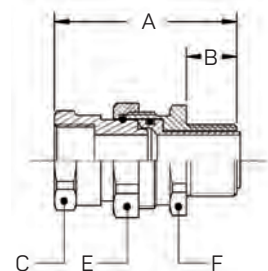
Note: For 90 degree versions, use BXC adaptor + Standard Fitting

SEALTITE®
FITTINGS

BARRIER BXC NPT:



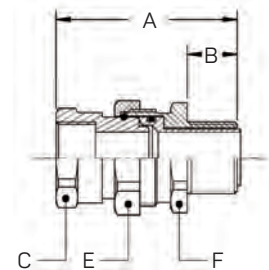
Trade Size	Threads In/Out	Item ID	Min. Int. Bore	Dimensions mm					KO Size NPT	Weight kg(lb)/100	Std. Pkg.
				A	B	C	E	F			
1/2"	NPT 1/2"	827.116.0	13.9	66	18	26	30	28	1/2"	11.6 (24.7)	10
3/4"	NPT 3/4"	827.120.0	18.6	69	18	32	35	34	3/4"	23.1 (33.7)	5
1"	NPT 1"	827.126.0	24.5	76	22	38	45	43	1"	37.6 (59.3)	5
1-1/4"	NPT 1-1/4"	827.135.0	32.0	78	22	48	55	52	1-1/4"	54.5 (89.9)	2



BARRIER BXC METRIC:



Trade Size	Thread In/Out	Item ID	Min. Int. Bore	Dimensions mm					Weight kg(lb)/100	Std. Pkg.
				A	B	C	E	F		
3/8"	M16 x 1.5	826.116.0	10.4	62	15	22	26	25	12.8 (18.1)	10
1/2"	M20 x 1.5	826.120.0	13.8	63	15	26	30	28	16.5 (24.3)	10
3/4"	M25 x 1.5	826.125.0	18.5	66	15	32	35	34	22.7 (32.8)	5
1"	M32 x 1.5	826.132.0	24.5	69	15	38	45	43	36.5 (56.9)	5
1-1/4"	M40 x 1.5	826.140.0	32.0	71	15	48	55	52	53.0 (86.2)	2



SPECIALTY FITTINGS

SEALTITE® ATEX FITTINGS STAINLESS STEEL AISI-316 NPT/METRIC SWIVEL ADAPTORS



DESCRIPTION

- Explosion Proof adaptor to be used with standard SEALTITE® Fittings for 90 degree (SEALTITE® Fitting not included)
- IECEx-ATEX approved barrier fittings to provide seal around loose wires inside the adaptor
- Barrier around loose wires created through a bi-compound epoxy sealing supplied with the adaptor
- IP66 between fitting and switch box
- Excellent corrosion resistance with AISI-316 Stainless Steel

SPECIFICATIONS

- AISI-316 Stainless Steel with PTFE clamping ring.
- Separate 2 compound epoxy provided for creating barrier.
- Colour: silver
- Temp. range: -45°C to 105°C (-49°F to 221°F)
- IECEx-ATEX certified:
CE0080 I M2 / II 2 GD / Ex d II C / Ex e II / Ex d I / Ex tD A 21 IP66

APPLICATIONS

- Female adaptor to standard SEALTITE® fitting.
- Explosion-proof areas where Zone system used
- Machinery for export to other countries where Zone system used
- Superior corrosion resistance with 316 Stainless

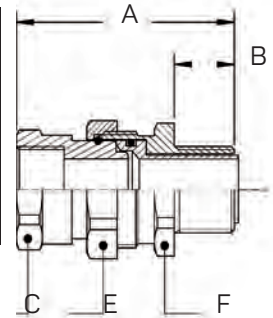
Note: For 90 degree versions, use BXC adaptor + Standard Fitting

SEALTITE®
FITTINGS

BARRIER BXC NPT:



Trade Size	Threads In/Out	Item ID	Min. Int. Bore	Dimensions mm					KO Size NPT	Weight kg(lb)/100	Std. Pkg.
				A	B	C	E	F			
1/2"	NPT 1/2"	827.116.9	13.9	66	18	26	30	28	1/2"	11.6 (24.7)	10
3/4"	NPT 3/4"	827.120.9	18.6	69	18	32	35	34	3/4"	23.1 (33.7)	5
1"	NPT 1"	827.126.9	24.5	76	22	38	45	43	1"	37.6 (59.3)	5
1-1/4"	NPT 1-1/4"	827.135.9	32.0	78	22	48	55	52	1-1/4"	54.5 (89.9)	2



BARRIER BXC METRIC:



Trade Size	Thread In/Out	Item ID	Min. Int. Bore	Dimensions mm					Weight kg(lb)/100	Std. Pkg.
				A	B	C	E	F		
3/8"	M16 x 1.5	826.116.9	10.4	62	15	22	26	25	12.8 (18.1)	10
1/2"	M20 x 1.5	826.120.9	13.8	63	15	26	30	28	16.5 (24.3)	10
3/4"	M25 x 1.5	826.125.9	18.5	66	15	32	35	34	22.7 (32.8)	5
1"	M32 x 1.5	826.132.9	24.5	69	15	38	45	43	36.5 (56.9)	5
1-1/4"	M40 x 1.5	826.140.9	32.0	71	15	48	55	52	53.0 (86.2)	2

