

FIRETECH

FIRETECH FITTINGS



SPECIFICATIONS

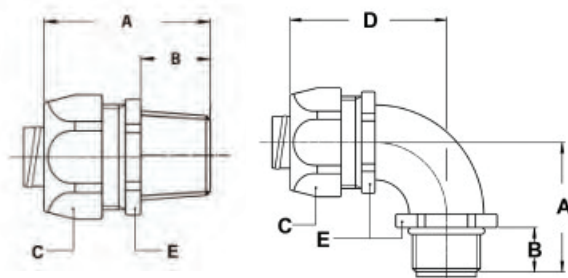
- Stainless steel AISI-304 fitting with brass adaptor for FireTech sleeve.
- Colour: Metal
- Temp. range: -45°C to 105°C (-49°F to 221°F)

APPLICATIONS

- For use with FireTech Sleeve
- Excellent corrosion resistance, mostly used in the off-shore, chemical and food industry

DESCRIPTION

- Stainless steel AISI-304 SEALTITE® fittings have a special adaptor for use with FireTech Sleeve
- FireTech is the ultimate heat protection for cables



FIRETECH FITTINGS:



Item ID	Conduit Size	Std. Pkg. (pieces)	Dimensions					KO Size
			A	B	C	D	E	
Dimensions - STRAIGHT								
SSFT38	3/8"	1	37 (1.45)	13 (0.51)	27 (1.06)	-	24 (0.94)	1/2"
SSFT50	1/2"	1	37 (1.45)	13 (0.51)	30 (1.18)	-	27 (1.06)	1/2"
SSFT75	3/4"	1	40 (1.57)	15 (0.59)	36 (1.41)	-	36 (1.41)	3/4"
SSFT100	1"	1	46 (1.81)	15 (0.59)	46 (1.81)	-	46 (1.81)	1"
Dimensions - 90°								
SSFT9038	3/8"	1	36 (1.41)	13 (0.51)	27 (1.06)	43 (1.69)	22 (0.86)	1/2"
SSFT9050	1/2"	1	36 (1.41)	13 (0.51)	30 (1.18)	43 (1.69)	27 (1.06)	1/2"
SSFT9075	3/4"	1	43 (1.69)	15 (0.59)	36 (1.41)	48 (1.88)	33 (1.29)	3/4"
SSFT90100	1"	1	48 (1.88)	15 (0.59)	46 (1.81)	59 (2.32)	42 (1.65)	1"

All dimensions in mm (inches) unless stated

